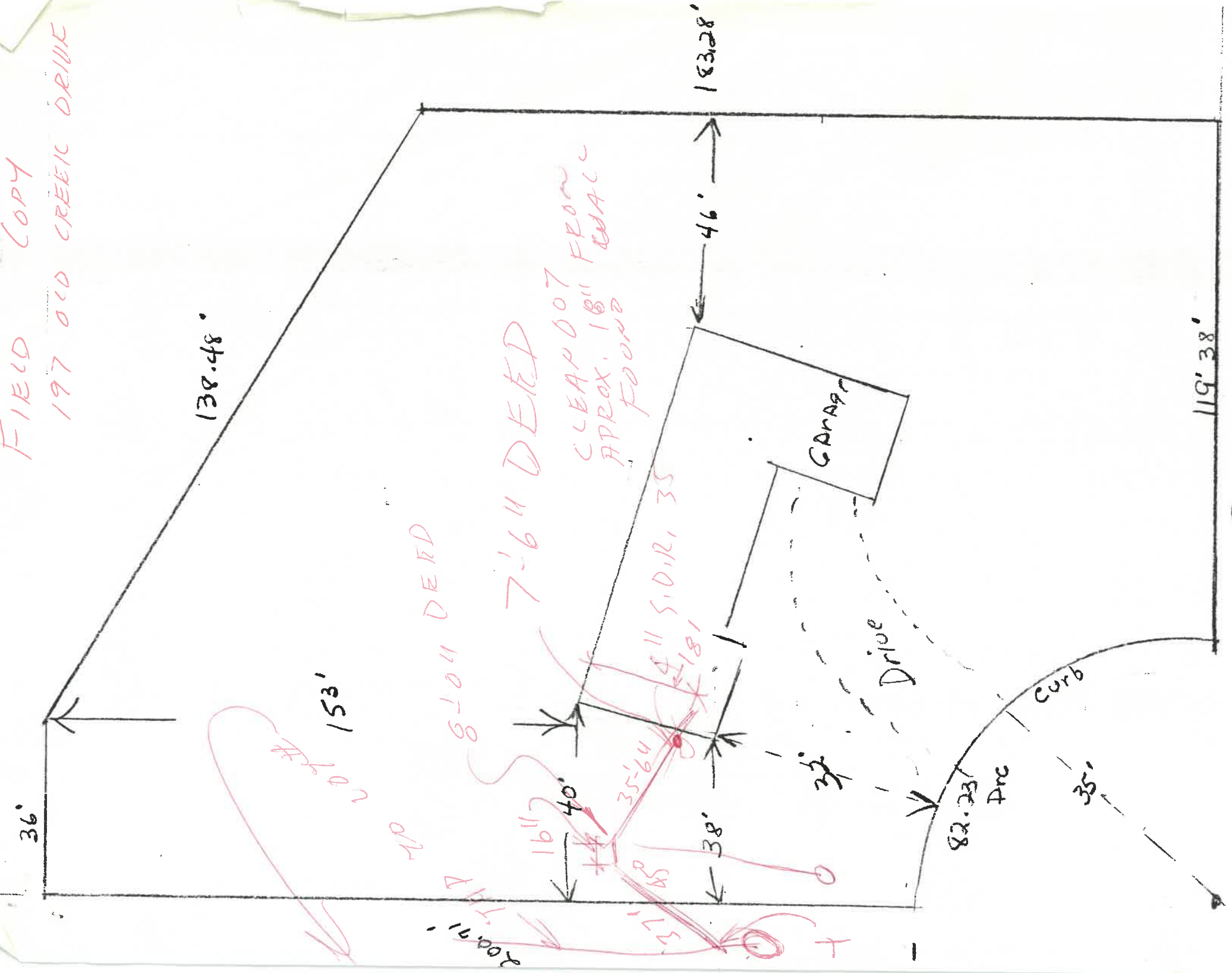


FIELD COPY
197 OLD CREEK DRIVE



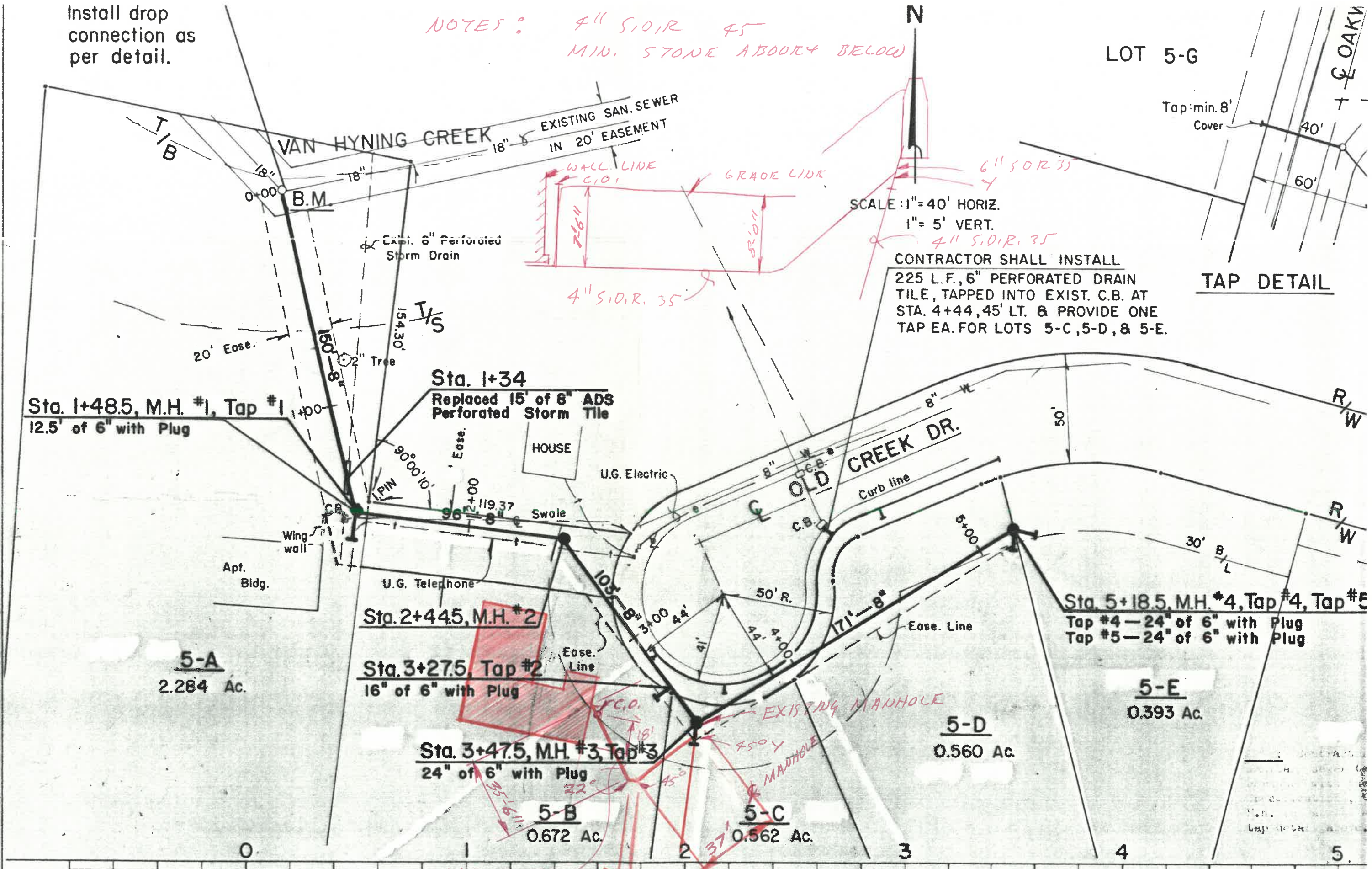
Phot Ph An
C. Hoglan Ran Zednick

~~1" = 20'~~

Install drop connection as per detail.

NOTES: 4" S.O.D.R. 45
MIN. STONE ABOVE & BELOW

LOT 5-G



SCALE: 1" = 40' HORIZ.
1" = 5' VERT.

CONTRACTOR SHALL INSTALL
225 L.F., 6" PERFORATED DRAIN
TILE, TAPPED INTO EXIST. C.B. AT
STA. 4+44.45' LT. & PROVIDE ONE
TAP EA. FOR LOTS 5-C, 5-D, & 5-E.

TAP DETAIL

DATE	
BY	
SURVEYED	
PLOTTED	
ALIGNMENT CHECKED	
RT. OF WAY CHECKED	
PLAN	
NOTE BOOK	
NO	

Sta. 3+47.5 M.H. #3
Top 676.60
676.44

Sta. 5+18.5 M.H. #4
Top 676.00
675.98